

*The powerpack*

*Universal Loader* **FL 700**

*Standard heavy duty slew transmission  
High lifting capacity due to tandem main arm cylinder*

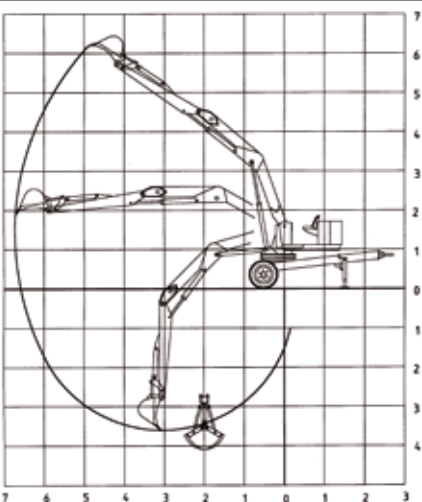


Schlingenerstraße 2a ▪ D-87668 Rieden ▪ Tel.: +49 8346 982026  
E-Mail: [info@ostler-maschinenbau.com](mailto:info@ostler-maschinenbau.com) ▪ [www.ostler-maschinenbau.com](http://www.ostler-maschinenbau.com)

## Technical Data

Maximum range of backhoe bucket	6,850 mm
Maximum range of load hook	6,000 mm
Max. operational depth of backhoe bucket	3,600 mm
Max. operational depth of earth bucket	4,000 mm
Max. operational height of load hook	5,800 mm
Lifting capacity without appliance	1,700-3,800 kg
Diameter of turntable	880 mm
Speed of power take-off shaft	540 U/min.
Slewing range	endless
Torque	1,800 Nm
Wheel gauge	1,800 mm
Overall width	2,030 mm
Tyres	11,5/15 impl. 10 ply
Support alternatively	hydraulic/mechanical
Dead weight incl. concrete ballast (without appliance)	2,900 kg

\*Dimensions are not binding. Changes in design may be subject to alterations.



## Special Equipment

- Dung bucket
- Earth bucket
- Timber bucket
- Rotation servo, hydraulic
- Backhoe bucket 30 to 60 cm
- Ditch bucket 100/125/150 cm
- Slewing device for ditch bucket
- Hydraulic support
- 2-lever (Euro) control
- Comfort control with safety bar
- Electro motor
- Oil flow meter

## Standard Equipment

- Control valve in sandwich design
- Seat and control system laterally arranged
- Covering of tube acc. to CE standards
- Tyres 11.5/15 impl. 10 ply
- Concrete ballast

