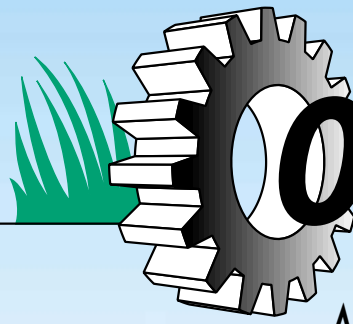


Hydraulic Loader HL 150



OSTLER
Richard Ostler
Maschinenbau GmbH

***Supreme technology
with modern
comforts!***



- ***Optimum geometry of crane due to toggle lever technology***

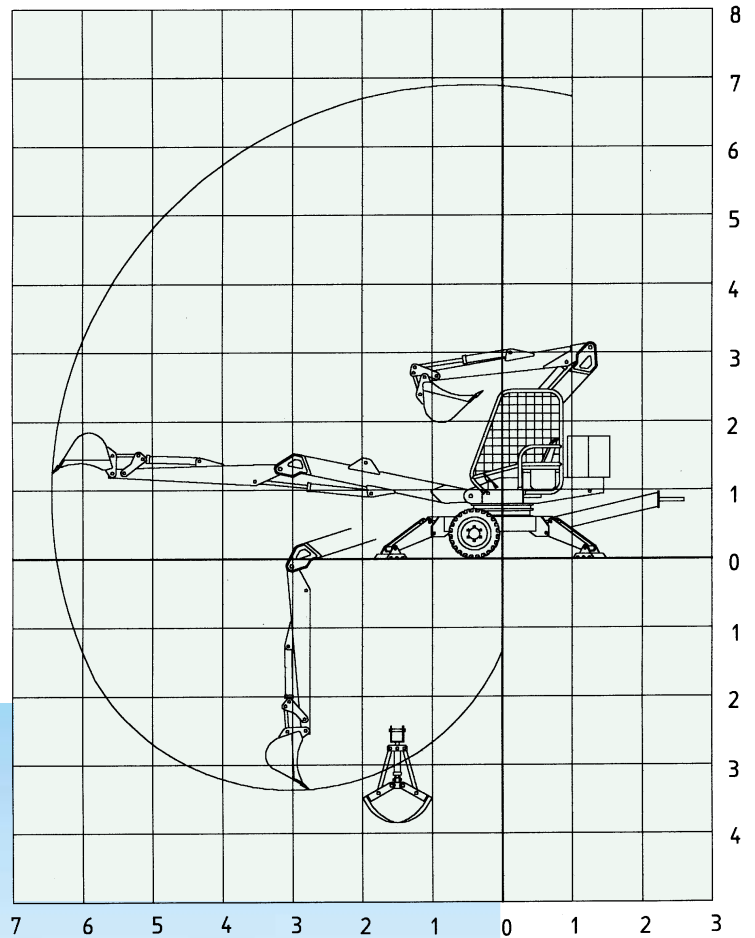
*Universal usage for dipper shovel and excavator operation,
loading of timber and dung, communal and recycling purposes*

Technical Data:

HL 150

Dead weight incl. concrete ballast (without appliance)	3,430 kg
Lifting capacity without appliance	1,150-2,900 kg
Working pressure	170 bar
Slewing range	endless
Maximum range of dipper shovel	6,500 mm
Maximum operational depth of dipper shovel	3,300 mm
Maximum operational depth of earth scoop	4,000 mm
Speed of power take-off shaft	540 revs/min
Overall width	2,030 mm
Wheel gauge	1,800 mm
Tyres	11.5 / 15 impl. 10 ply
Support	hydraulic

Dimensions are not binding. Changes in design may be subject to alterations.



CE In-house development and production according to CE standards



HL 150

Standard Equipment:

- CE safety driver's cabine
- Hydraulic support
- 2 hydraulic fast locking couplings (articulated arm)
- 2-lever comfort control

Special Equipment:

- Electromotor 7.5 kw
- Double pump (2-circle arrangement)
- High capacity clam
- Earth scoop with two cylinders
- Weather protecting hood

Richard Ostler Maschinenbau GmbH · Schlingener Str. 2a · D-87668 Rieden b. Kaufbeuren

Phone: +49 (0) 83 46/98 20 26 · Telefax: +49 (0) 83 46/98 20 27

e-mail: info@ostler-maschinen.de · www.ostler-maschinen.de