

LOGGING TRAILER

uncomplicated, reliable, low maintenance
& powerful—
the way a logging trailer should be!



Schlingenerstraße 2a • D-87668 Rieden • Tel.: +49 8346 982026
E-Mail: info@ostler-maschinenbau.com • www.ostler-maschinenbau.com

Technical Data

LOGGING TRAILER

Model	RW 4-07	RW 5	RW 6
Unladen weight	approx. 1,700 kg	2,500 kg	approx. 3,000 kg
Max. laden weight	11 t	14 t	16 t
Frame	centre tube frame	Centre tube frame, mechanical extension by 1.20 m	
Length of loading area	ca. 3.85 m	3.85 m (short)/5.05 m (extended)	
Overall length	ca. 6.00 m	6.05 m (short) - 7.25 m (extended)	
Load capacity	11 m³	approx. 13 m³	
Ground clearance	60 cm	75 cm	80 cm
Width	2.20 m	2.38 m	2.45 m
Drawbar	hydraulically adjustable to both sides by 35°	hydraulically adjustable to both sides by 40°	
Axles	rigid axles	seesaw tandem axles, position of axles movable by approx. 2.70 m	
Brake system	hydraulically actuated drum brake or compressed-air brake system		
Size of tyres	400/60 -15,5	500/50 -17	550/45-22,5
Front railing	Standard		
Lighting system	Standard		
Mechanic frame extension (rear) by means of two stakes	Optional	Standard	

LOGGING CRANE

Model	FK 6,5	FK 4
Standard reach of crane optionally	6.80/15 kNm	5.60 m
with double telescopic boom	8.00 m/22 kNm	6.80 m
Slewing range	360°	360°
Swivel gear	4-cylinder rack-and-pinion swivel gear	live ring, heavy-duty swivel gear
Work pressure	180 bar	150 bar
Lifting capacity at max. extension	450 kg	Standard 660 kg, with telescopic boom 480 kg
Unladen weight	980 kg	Standard 780 kg, with telescopic boom 850 kg
Timber clam opening	1200 mm	1000 mm
Torque rotator	1000 Nm	700 Nm
Control valve	sandwich design, incl. 2-lever-control (2 functions electrically controlled)	

Specifications and design subject to change without further notice.



In-house development
and production according
to CE standards

RW

The perfect trailer for every purpose!

Our logging trailer RW 5 has a maximum laden weight of 14,000 kg with an unladen weight of 2,500 kg. The length of its loading area can be extended mechanically by 1.20 m from 3.85 m to 5.05 m.

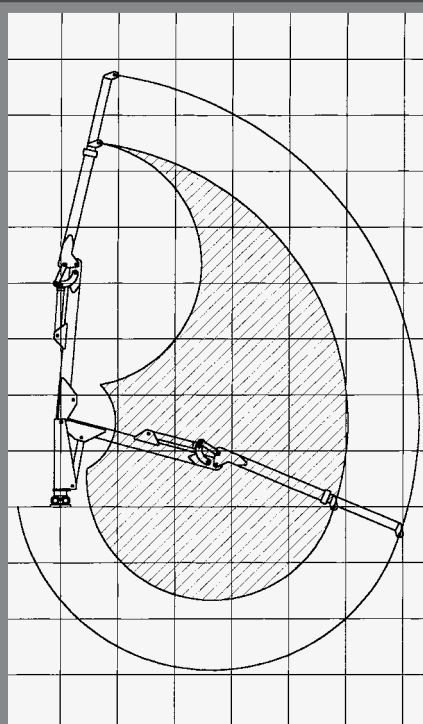
With an unladen weight of approx. 1,700 kg the smaller logging trailer RW 4 has a maximum laden weight of 11,000 kg. The trailer's loading area has a length of approx. 3.85 m.

All models are equipped with hydraulic brake systems and have the option of compressed-air brake systems, internal oil supply systems or traveling mechanisms powered by wheel hub motors.

Ostler logging trailers are convincing because of their extremely robust design.

The name Ostler stands for utmost quality and flexibility.

As our company designs and builds all products at our headquarters in Rieden, we are able to comply with your individual requests. Due to rising prices for raw materials wood is more in demand – invest in your future!



The logging crane for RW 5 has a standard reach of 6.80 m and is equipped with four swivelling cylinders. The lifting capacity (tool included) at 6.80 m is 450 kg. The smaller model (for RW 4) reaches 5.60 m and is equipped with a heavy-duty swivel gearbox.

Timber clam and torque rotator are standard equipment.

The slewing range is 360°. Optionally the crane can be extended by means of a double telescopic boom.

RW 5



Further optional equipment: radio control and electromagnetic control.



Branch cutter (special equipment)
Working width 2.20 m; incl. adjustable cylinder

RW 4

