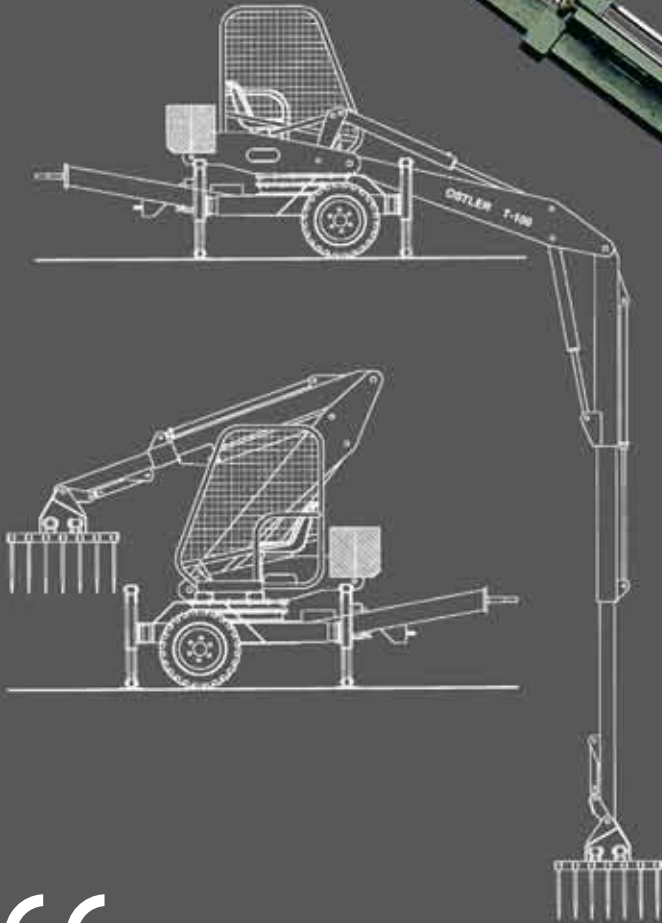




*Telescopic Loader*

**T 100**

*Main arm slewable to the back  
For work carried out with confined space  
Technical advantage due to row-link system*



In-house development and production  
according to CE standards



Schlingenerstraße 2a ▪ D-87668 Rieden ▪ Tel.: +49 8346 982026  
E-Mail: [info@ostler-maschinenbau.com](mailto:info@ostler-maschinenbau.com) ▪ [www.ostler-maschinenbau.com](http://www.ostler-maschinenbau.com)

## Technical Data

	<b>T 100</b>
Maximum range of hay clam	9200 mm
Maximum range of load hook	8200 mm
Maximum operational depth of hay clam	6500 mm
Height in transport position	2950 mm
Lifting capacity without appliance	300-2400 kg
Diameter of turntable	880 mm
Speed of power take-off shaft	540 revs/min.
Slewing range	endless
Wheel gauge	1800 mm
Overall width	2100 mm
Tyres	10,0/75 -15,3
Support alternatively	hydraulic/mechanical
Dead weight incl. concrete ballast	3200 kg

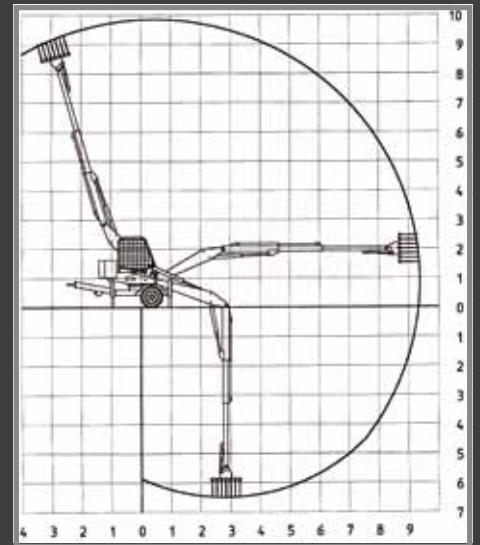
Dimensions are not binding.  
Changes in design may be subject to alterations.

*Multimobile  
extreme mobility!*



## Standard Equipment

- Hay clam 1600, 2 x 7 tines
- Electromotor 5.5 kw
- 2-lever (EURO) control
- Load support valves
- Safety driver's cabine
- Fourfold mechanical support
- High position of clam
- Concrete ballast



## Special Equipment

- Hay clam 2000, 2 x 6 tines
- Hydraulic drive
- Earth scoop
- Hydraulic support
- Hour meter

# T100



In-house development and production  
according to CE standards