

Universal Loader K2 P



Technical Data

Engine, **Euro Stage V**: Kubota, 4-cyl. diesel engine, water cooled, 18.5 kW/25HP, 2300rpm

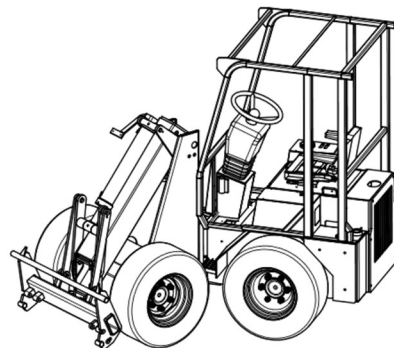
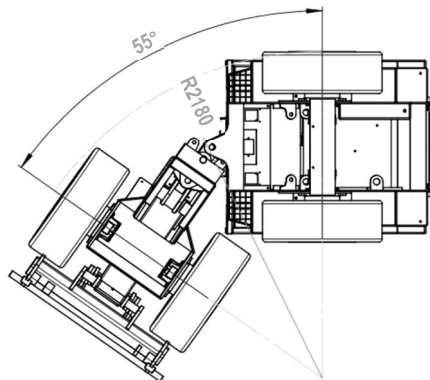
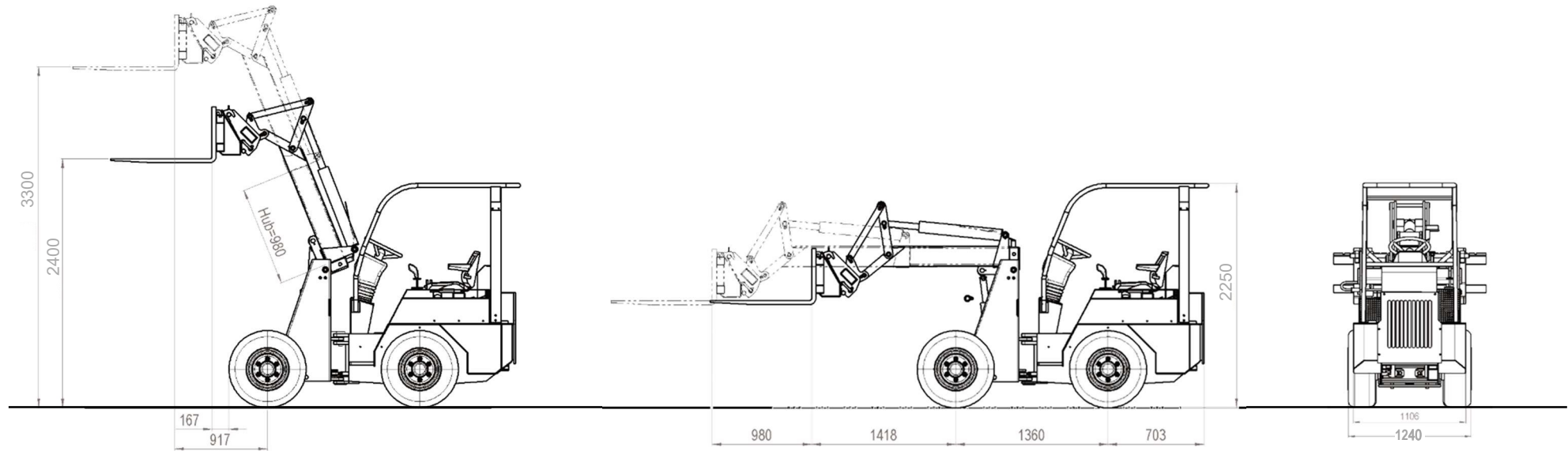
Engine, **Euro Stage V**: Kubota, 4-cyl. petrol engine, water cooled, 43 kW/58HP, 3600rpm

Lifting capacity:	1200 kg standard
Lifting height:	3300 mm, lower side pallet fork
Tipping load:	1300 kg, straight in-line, telescope retracted
Front axle:	Stiff, optionally telescopic, width 1240-1837 mm
Rear axle:	Pendulous rear axle
Front loader:	Hydraulic telescopic lift mast, max. height 3.3 m
Drive:	All-wheel, hydrostatic drive at each wheel, 0-18 km/h
Driving hydraulic:	Adjustable axial piston pump 400 bars, 4 fully hydraulic wheel motors in direct drive
Working hydraulics:	diesel engine: gear pump 37 l/min, 180 bar petrol engine: gear pump 58 l/min, 180 bar
Service brake:	By hydrostatic drive, on all wheels
Parking brake:	Spring loaded brake, rear
Tyres:	Standard 10.0/75 – 15.3AS, tot. loader width 1.24 m
Driver seat:	Comfort seat with integrated contact switch, safety belt
Steering column:	Comfort steering column, inclination adjustable, with operating hours counter, fuel gauge
Tool carrier:	EURO-Norm with mech. locking
Fuel / oil tank	Integrated safety tanks, 20 l / 40 l
Empty weight:	2060 kg (front / rear axle 590 / 1470 kg)
Turn. radius outside:	Inside 1180 mm, outside 2180 mm, articulating angle 55°

Data for information only, modifications reserved, V 2.3



Universal Loader K2 P



- Short wheelbase of only 1.36 m
- Narrow chassis of only 1.24 m width
- Low height of only 2.25 m
- Tight turning radius outside of only 2.18 m
- High lifting height up to 3.30 m
- High lifting capacity up to 1.2 t
- **Optimal composition of compactness, manoeuvrability, large workspace and high lifting capacity**

Data for information only, modifications reserved, V2.3